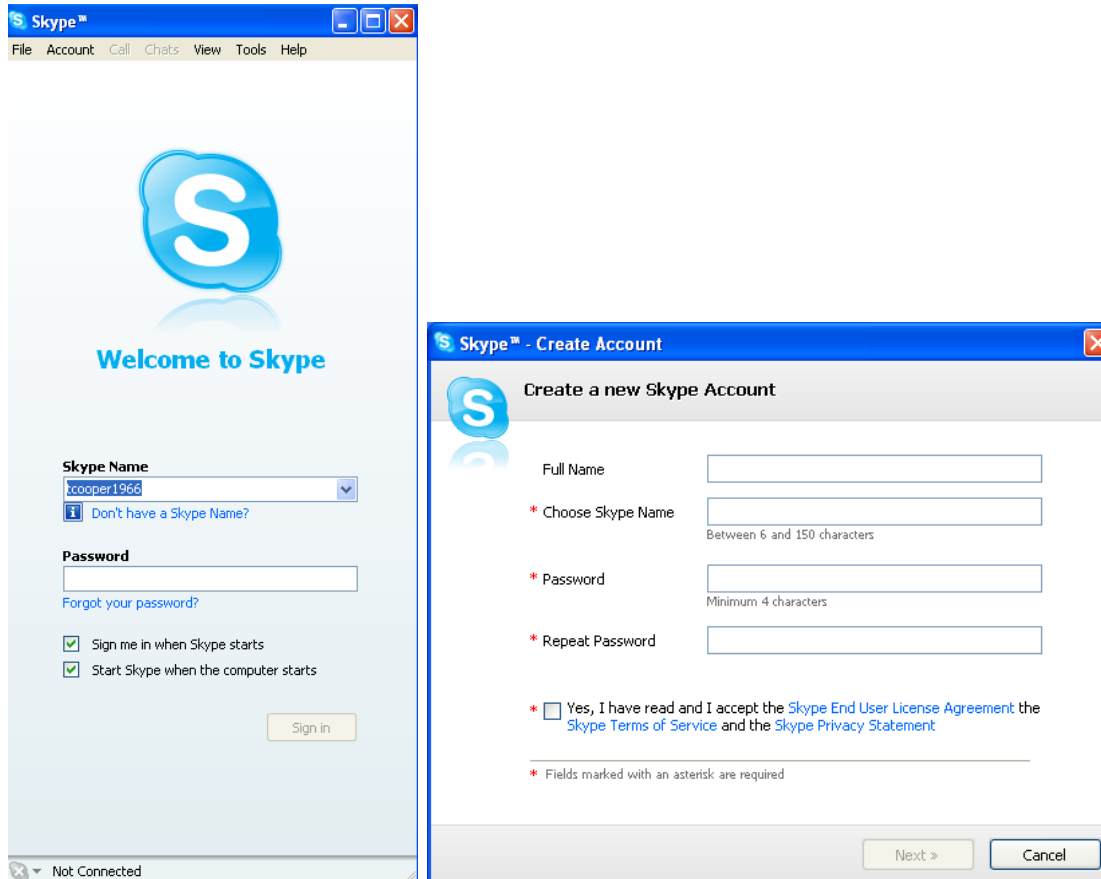




1. Click on the Skype icon on your desktop to open the computer.



2. When the program starts, you should see 2 screens.
3. In the second screen that says “Create a new Skype Account”, type in your “Full Name” (ex. Thomas Cooper).
4. Choose a Skype Name (ex. tcooper66). I suggest using the same name you used to set up your Gmail account to make it easy to remember both.
5. Choose a “Password”. I suggest using the same password you used to set up your Gmail account to make it easy to remember both.

6. NOTE: Passwords must be at least 4 characters. I suggest using a password strategy for all of your social media accounts. For example you might choose a core word, such as your pet's name (ex. Tabitha) and then the month and year they were born (ex. 0807) for a password strategy of "tabatha0807".
7. Repeat the Password.
8. Check the User Agreement box to accept the license agreement.
9. Click the "Next" button.

Skype™ - Create Account

Create a new Skype Account

* E-mail

A valid e-mail address is the only way to retrieve lost passwords.

Yes, send me Skype news and special offers

Country/Region

City

Sign me in when Skype starts

* Fields marked with an asterisk are required

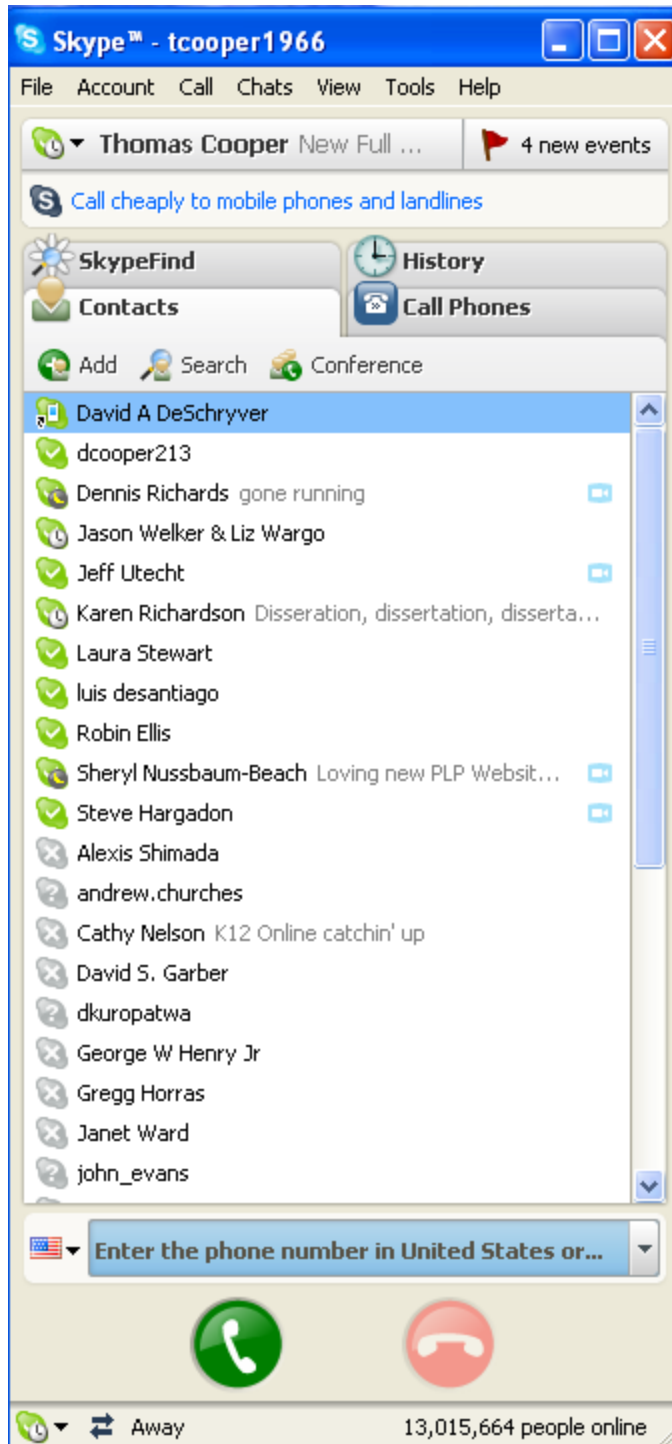
« Back Sign In Cancel

10. Type in your email address. I suggest using your Gmail account information here (ex. tcoper66@gmail.com)
11. Choose a County/Region. This is important so that other Skype users know where you are from. Many networked teachers are interested in having their students learn from others around the country and the globe. For instance, the German teacher at our school uses Skype to find teachers in Germany that might want to collaborate on a project with her German students. If the teacher had not put in their country and city, this would not be possible.

12. Write in the City you live in, or the city where your school is located. For instance, I live in Atlanta, but the school I work at is in Marietta.
13. Keep the box checked that says "Sign me in when Skype starts".
14. Click "Sign In".



15. If you don't keep the automatic login checked when setting up an account, when you open Skype you will see a screen similar to the one above. To log in, enter your password and then click "Sign In".



16. Once you are logged in, you should see a screen, similar to the one above. However, yours will not have any contacts added.